

Blue Valley Community
Action Partnership

Annual Report
2003-2004

*Serving the People of Southeastern Nebraska
and North Central Kansas.*

1966-2005

Table of Contents

Letter from the BVCA Partnership Board President	1
2003-2004 Board of Directors	1
Letter from the BVCA Partnership Chief Executive Officer	2
2003-2004 Management Team	2
Resources and Support	3-4
Revenues	3
Expenses.....	4
Client Data.....	5-6
The Promise of Community Action	7
The Seven Principles of Community Action.....	7
Our Mission Statement	7
How BVCA Has Changed Lives.....	8-14
Health Services.....	8
Nutrition Services.....	8
Family Development	9
Outreach Services	9
Transportation Services	9
Emergency Services	10
Homeless Services.....	10
Juvenile Services.....	10
Children Services	11-12
Housing Services and Development	13
Volunteer Opportunities	14
Staff.....	14
Blue Valley Community Action Partnership Sites	15-16
Acknowledgment.....	17



Helping People...Changing Lives

Board of Directors 2003-2004

Executive Committee

Willis Luedke, President
Velma Lutz, Vice President
Karen Elznic, Secretary
Albert Simacek, Treasurer
Cliff Bailey, Legislative

The Members...

Public Sector Representatives

George Scholz, Butler County
Albert Simacek, Fillmore County
Ray Capek, Fillmore County
Harlan Hagemeyer, Gage County
David Swavely, Gage County
Tony Likens, Jefferson County
Michael Simonsen, Polk County
Willis Luedke, Saline County
Ray Naber, Seward County
Joe Ruzicka, Seward County
Lawrence Traudt, Thayer County
James Klute, York County
Bob Wolfe, York County

Private Sector Representatives

Don Naiberk, Butler County
Anna Kinnison, Butler County
Shirley Hall, Fillmore County
Len Hawkins, Gage County
Nella Gene Clinefilter, Jefferson County
Don Schneberger, Polk County
Wayne Nestor, Polk County
Larry Barrett, Saline County
John Walton, Thayer County
Kenny Vieselmeyer, Thayer County
Charles Bumgarner, York County
Chris Tonniges, York County

Low-Income Sector Representatives

Pamela Allen, Butler County
Evelyn Uphoff, Butler County
Daniel Hall, Fillmore County
Karen Elznic, Fillmore County
Judy Doerr, Gage County
Connie Rieber, Gage County
Roger Rupp, Jefferson County
Sam Mishler, Jefferson County
Joyce Knudson, Polk County
Bonnie Schoenbeck, Saline County
Velma Lutz, Seward County
Lucinda Johnson, Seward County
Daryl Ream, Thayer County
Roberta Woolston, Thayer County
Rita Critel, York County

Petition Ex-Officio Representatives
Cliff Bailey, Head Start Policy Council

From The Board President...

The governing board of Blue Valley Community Action Partnership invites you to review the Annual Report covering the 2004 program year. As president, I have had the opportunity to oversee the growth of this organization that has been helping the area for thirty-nine years. I thank my fellow volunteer board members and the many volunteers who together, with dedicated staff, have served the less fortunate for these many decades. We look forward to yet another exciting year.

BVCA's board consists of low-income residents, elected by their peers; county board members selected by each county government; and private sector interests from religious representatives and civic organizations to business and industry leaders. Recently the board has added a seat for the Youth Empowerment Council. This unique diversity of governing board members has allowed for thorough consideration when critical decisions are agreed to on the large variety of projects the organization undertakes.

Projects that are on the 2005 agenda include completing fifteen new homes in York, investigating expansion of the York centers, establishing programs and projects from the expanded and remodeled youth center in Fairbury (the Fairbury Youth Involvement Center or the FYI Center) and beginning consideration of programs that address demographic changes in the area. The organization is expanding programming in the maternal and child health and minority health services areas. Juvenile Services will also be expanded, as Blue Valley participates in the new "Freedom Corps" as part of AmeriCorps and adds programming with the new youth resource center. While it may not match past year's 50% growth, it promises to be another busy year.

Blue Valley Community Action changed its name last year to add Partnership to better reflect the method the organization uses as it collaborates within the communities to address local needs. We rarely do projects or services alone. Without the support and assistance of our neighbors and friends, within the multi-county service area, many of our efforts would not be successful. The volunteers number into the thousands, so I cannot list them here, but we very much appreciate each and every one of you. If you have not been part of our efforts, or if you haven't done so recently and wish to join us in our partnership to help people and change lives, please contact your local Blue Valley Community Action Partnership office or call the main office. If you want to know more about us, please contact us at our website www.bvca.net, contact our office in your area, call the main office or read on in this annual report.

... *From The Chief Executive Officer*

Blue Valley Community Action Partnership's fiscal year 2004 saw some internal adjustments in management and programming to account for tight money and rising costs. In spite of these adjustments, the organization continued serving nearly 13,000 individuals.

The philosophy of this organization has always been to look at the whole family and focus on all of the needs and challenges they have in order to change their lives and offer them their best opportunity for success and self-sufficiency. This comprehensive approach avoids putting individuals into unworkable categories often associated with one program or another, particularly those with extensive eligibility criteria and guidelines. For a family to succeed when working with organizations such as community action or other human services, they must have a sense of accomplishment, not dependency.

We, as providers, must be flexible in our efforts and avoid patting ourselves on our back when we should be patting our clients on their back for their successes. Programs like to brag of their successes. It is a natural result of the competitive funding many programs have to endure. We must be careful not to confuse our need to advance program funding with the need to assist families surpass their own expectations.

It would be nice if funding were not so competitive. We wouldn't risk it deflecting us from our pursuit of client success. However, funding will most likely be even more competitive in the future. Competition is not always bad, for it does make us try harder to show the effectiveness of our approach and it does hone our grant writing skills. The conflict between crediting our clients for their success and the need to have programs claim credit for the benefit of funders points to the need for independent resources and/or gifts from the public.

In this annual report you will see some of the accomplishments of our clients and the success of our approach to serving them. As you read, perhaps you can consider being a part of our partnership. Contributions help us in many ways—more than just the money, but also the message of hope and client recognition it engenders. Your tax-deductible contributions are always sincerely appreciated.



Willis Luedke, Board President (left)
Richard Nation, CEO (right)

Management Team 2003-2004

Chief Executive Officer
Richard D. Nation

Chief Financial Officer
Robin Mayer

Human Resources
Loree Rix-Crouse

Research & Planning
Dawn-Renee Smith

Blue Valley Crisis Intervention
Carmen Grummert, Director

Domestic Violence/Sexual Assault
Crisis Intervention
Public Information
Juvenile Services/Diversion Programs
AmeriCorps

Family & Community Services
Ardith Hoins, Director

Food Programs
Family Development
Emergency Shelters/Services
Transit Services
Saline Eldercare
Foster Grandparents
County BVCA Partnership Centers
Homeless/Near-Homeless Assistance

Health Services
Janie Fralin, Program Director
Women, Infants & Children
Immunizations
Hispanic Health Services
Every Woman Matters
Community Access to Coordinated
Healthcare
Respite
Maternal Child Health

Housing & Rural Development
Jerri Kerr, Director
Community Housing Development
Weatherization & Home
Rehabilitation
Housing Rentals
Homeowner Assistance Services

Children & Youth Services
Kathryn Molczyk, Director
Blue River Family Resource Center
Blue River Child Development
Head Start
Early Head Start

Helping People...Changing Lives

Helping People...Changing Lives

RESOURCES AND SUPPORT

STATE OF KANSAS GRANTS:

Food Programs \$11,332.70

UNITED WAY SUPPORT:

Cornhusker United Way \$9,208.00
Gage County United Way \$3,356.66
United Way of America \$19,114.00
Total \$31,678.66

PRIVATE INVESTMENT REVENUES:

Corporate \$268,512.76
CATCH \$75,654.00
CATCH Breastfeeding \$45,000.00
Childcare Mini-Grants \$4,257.43
Pickle Cards \$56,529.51
Administration Fees \$26,551.10
Management Fees \$89,301.67
Development Fees \$19,500.00
Revolving Loan Programs \$64,919.80
Total \$632,676.27

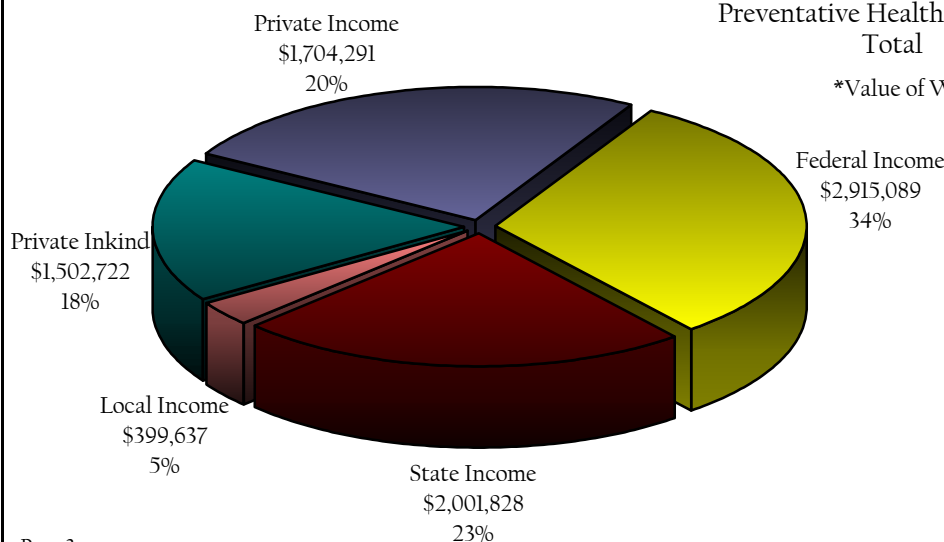
RENTAL INCOME:

Eagle Apartments \$14,585.16
Diller Units \$16,802.65
Osceola Units \$31,067.00
Fillmore County Units \$56,233.65
Dorchester Units \$14,056.49
HOME Rents \$7,612.08
Blue River Family Resource Center \$26,210.96
Valley Heights I & II \$178,824.29
Derby Apartments \$127,299.07
Crook Apartments \$126,195.69
6th Avenue Apartments \$33,858.73
Total \$632,745.77

STATE OF NEBRASKA GRANTS:

NEBHands \$19,092.00
AmeriCorps \$30,844.19
CSFP (Commodity Distribution) \$84,224.00
WIC (Health & Nutrition) *\$637,205.00
NHAP (Homeless Assistance) \$91,043.30
Maternal Child Health \$69,188.00
Immunization \$30,114.53
Sexual Assault \$14,864.83
Domestic Violence \$96,576.11
VOCA (Victims of Crime Assistance) \$84,208.13
CSBG (Community Services) \$276,675.00
Child Care Food \$99,075.89
Hispanic Healthcare \$14,745.34
Minority Healthcare \$20,842.64
Juvenile Justice \$44,014.18
SESAME \$94,183.83
CHDO (Housing Development) \$161,552.45
Assistive Technology \$16,245.00
ESGP (Emergency Shelter) \$22,390.94
DOE Weatherization \$108,116.72
LIEAP Weatherization \$115,407.02
Every Woman Matters \$99,997.66
Playground/Partnership \$1,511.59
Homeownership Assistance \$135,951.17
Lead Screening \$14,274.85
HHSS CATCH \$106,760.36
Early Childhood Initiative \$18,688.57
Deshler Disaster \$12,100.00
Gage/Saline/Cass Disaster \$20,000.00
Weatherization T & TA \$5,875.00
Juvenile Services \$5,480.77
Integrated Women \$3,000.00
Stop Smoking \$500.00
Heads Up Reading \$2,000.00
SE Regional Rehab \$13,531.71
BRFRC SE Regional Training \$22,416.08
Preventative Health \$21,000.00
Total \$2,613,696.86

*Value of WIC Vouchers Awarded: \$440,054.00



**BVCA's
2003-2004
Total Revenues:
\$11,159,165**

RESOURCES AND SUPPORT

LOCAL GOVERNMENT SUPPORT:

Butler County	\$4,590.00
Fillmore County	\$3,456.00
Gage County	\$10,789.20
Jefferson County	\$4,374.00
Polk County	\$2,970.00
Saline County	\$7,236.00
Seward County	\$8,640.00
Thayer County	\$3,186.00
York County	\$7,614.00
Saline Eldercare:	
City of Lincoln	\$38,576.07
Cities of Crete, Friend, & Wilber and the Communities of Swanton, DeWitt, Tobias, Western, & Dorchester	\$16,406.12
Jefferson County Good Beginnings	\$4,710.20
Home Office Expansion Bond	\$248,585.08
Total	\$361,132.67

U.S. GOVERNMENT DIRECT GRANTS:

Head Start	\$1,798,028.70
Foster Grandparents	\$247,129.59
HUD Supportive Housing	\$193,458.58
Early Head Start	\$557,050.86
Rural Development	\$93,016.34
CSFP Commodities	\$557,050.86
Total	\$3,445,734.93

LOCAL FEES:

Blue River Child Development	\$340,479.43
Project First Escrow	\$402.52
BV Technical Services Fees	\$45,507.00
Total	\$386,388.95

LOCAL PRIVATE SUPPORT:

Pantries	\$31,298.52
Clothing Sales	\$165,958.16
Inkind Contributions	\$1,935,582.94
Local Donations	\$39,270.76
Local County Projects	\$65,936.00
Total	\$2,238,046.38

OTHER REVENUES:

Respite	\$63,356.59
Fillmore Transit	\$75,770.58
FYI Center	\$77,250.00
Total	\$216,377.17

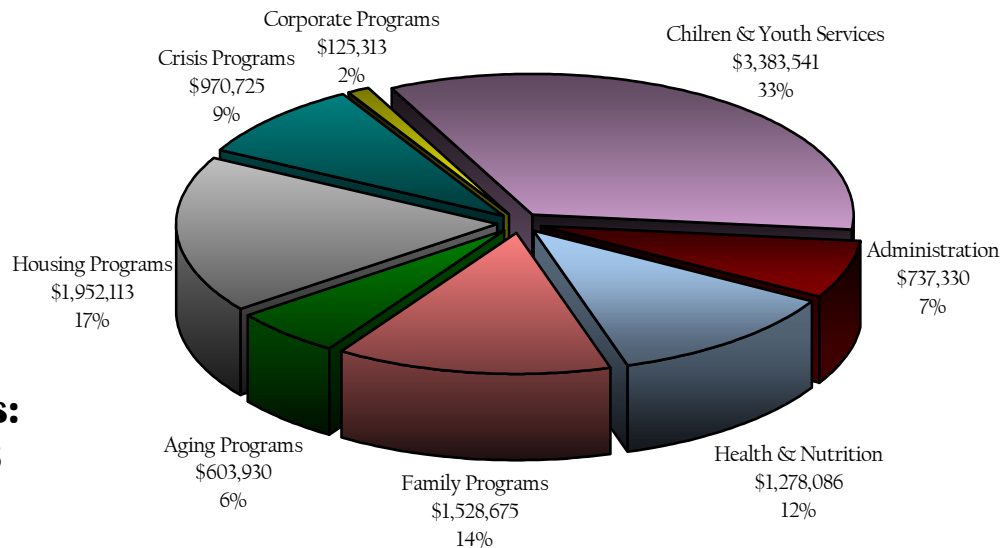
CONSTRUCTION/ASSET FUNDING:*

Bar-None	\$65,000.00
Blue Terrace CROWN	\$103,550.54
Fairmont/Exeter	\$176,374.90
Bellwood/Rising City	\$233,136.28
York Place CROWN	\$11,293.09
Total	\$589,354.81

Note: Grants are identified by entity awarding them to BVCA Partnership.

* BVCA is the general partner in eight housing partnerships not included in these figures. See Page 13 for a listing.

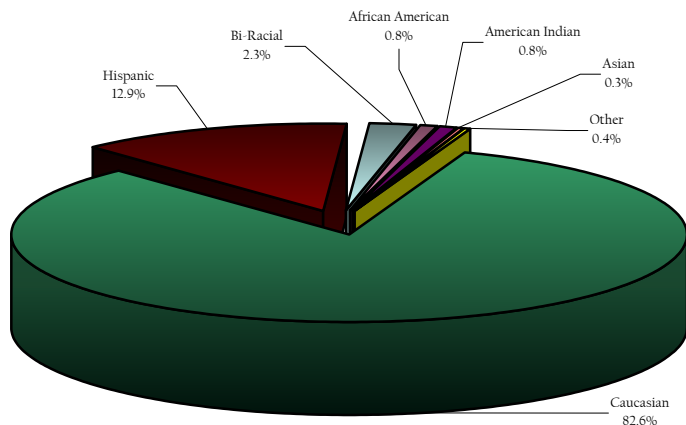
**BVCA's
2003-2004
Total Expenses:
\$10,879,713**



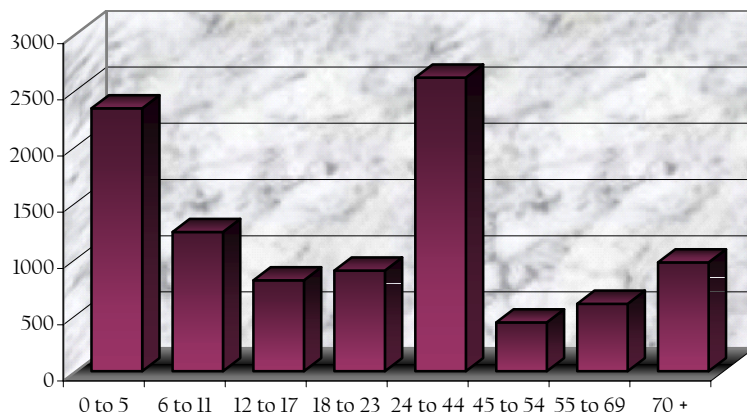
Helping People...Changing Lives

During 2003-2004, 14,050 individuals were served by BVCA Partnership.

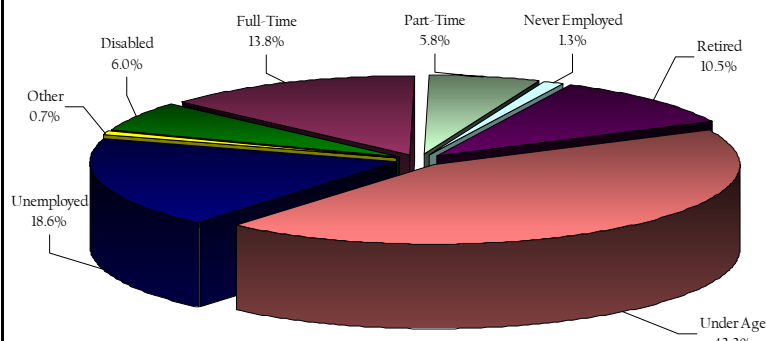
Racial/Ethnic Background



Ages of Clients Served



Client Employment Status



Family Structure

Marital Status:

25%	Married
52%	Never Married
7%	Widowed
7%	Divorced
7%	Living Together
2%	Separated

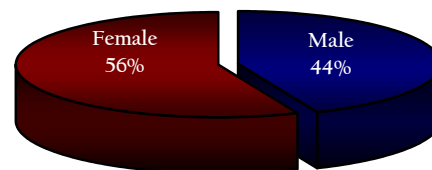
Parental Status:

22%	Two Parents
8%	Single Parent
1%	Non-custodial Parent
3%	About to Become a Parent
19%	Adults, No Children
47%	Not of Parenting Age

Average Family Size: 2.3 persons



Gender Breakdown



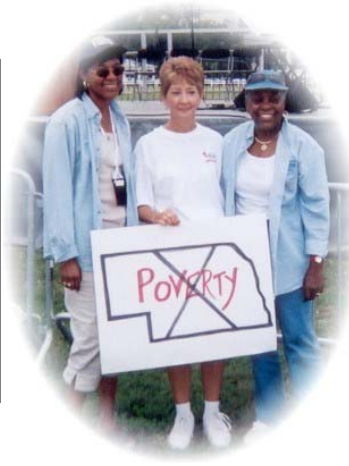
Working In Poverty

A single parent with three children requires \$2,522/month to be self-sufficient in the BVCA area of Nebraska. The federally recognized poverty rate for such a family is \$1,570.83/month. The average pay for such families accessing BVCA's services is \$1,304/month. The minimum wage in Nebraska and the US is \$866/month. To be self-sufficient, while working full-time at minimum wage would require a person to work three, full-time (8 hours a day) jobs or 24 hours per day.

Poverty vs. Welfare

While more than 94.9% are below 185% of poverty, only 4.3% are on welfare (TANF/AFDC)*

** of those reporting income levels*



Client Poverty*

Below 185% of Poverty: 94.9%
Below 80% of Poverty: 55.3%
Between 80% & 125% of Poverty: 27.3%
Between 125% & 185% of Poverty: 12.3%
Above 185% of Poverty: 5.1%

** of those reporting income levels*

Children Are Impacted Most By Poverty but if you are poor you cannot make it without help...

Counties	Total Poverty	Poor Children Under Five	Elderly Poor	Poverty Level For Family of 4	Self-Sufficiency Level For Family of 4
Butler	8.1%	13.7%	9.4%	\$18,850	\$30,305
Fillmore	7.8%	11.6%	10%	\$18,850	\$27,394
Gage	8.7%	12.9%	8%	\$18,850	\$31,658
Jefferson	8.9%	14.7%	8.7%	\$18,850	\$30,118
Polk	5.8%	9.9%	4.7%	\$18,850	\$30,243
Saline	9.4%	7.1%	9%	\$18,850	\$30,909
Seward	7%	7.4%	6.8%	\$18,850	\$30,098
Thayer	10.7%	17%	11%	\$18,850	\$30,202
York	8.5%	12.5%	7.1%	\$18,850	\$31,470
Jewell	11.6%	16.3%	10.9%	\$18,850	na
Smith	10.7%	14.6%	9.5%	\$18,850	na
Total	8.6%	11.6%	7.7%	\$18,850	\$30,264

Poverty Levels: 1 Person \$9,310 Gross; 2 Persons \$12,490; 4 Persons \$18,850

Education

5%	College/Tech Graduates
7.6%	High School Graduates w/ Some College
25.9%	High School Graduates/GED
15.5%	Non-graduating Adults
21.5%	Current K-12 Students
24.5%	Pre-School Age

Declining Medical Insurance

	2002	2004	Change
Kids Connection	28.3%	28.1%	-.2
Medicaid	15.0%	13.8%	-1.2
Medicare	8.4%	8.7%	+.3
Native American Health	.1%	.1%	
Private Insurance	22.4%	21.1%	-1.3
No Insurance	25.8%	28.2%	+2.4

Helping People...Changing Lives

Helping People...Changing Lives

THE PROMISE OF COMMUNITY ACTION

Community Action changes people's lives, embodies the spirit of hope, improves communities, and makes America a better place to live. We care about the entire community and we are dedicated to helping people help themselves and each other.



THE SEVEN PRINCIPLES OF COMMUNITY ACTION

OPENING DOORS AND LEADING THE WAY We provide access to the opportunities people need to improve their lives, to help themselves and each other.

TURNING HOPE INTO REALITY We identify the needs of the entire community, collaborate with others in the community and take action to improve life for everyone in the community.

EMPATHIZING Our staff and volunteers are from the community they serve.

TREATING PEOPLE WITH RESPECT We treat people the way we want to be treated.

SAYING "YES" If we do not provide the needed service, we will link you to those who do.

GIVING A VOICE TO THE POOR Through our advocacy, we seek to make society more flexible and responsive to the needs of the poor.

MIRRORING THE DIVERSITY OF OUR COMMUNITIES Our local boards include low-income people, local public officials, business and community groups.

BVCA PARTNERSHIP'S MISSION STATEMENT

To build upon strengths by providing diverse and innovative opportunities to impact personal responsibility, family well-being, and community development.



HEALTH SERVICES

BVCA Partnership operates several programs and certain screenings, including WIC (Women, Infants and Children), EWM (Every Woman Matters), Immunizations, and many services through the CATCH Network.



- * 337 Nurse Triage calls helped families in crisis.
- * 597 individuals received PHONE (Public Health Outreach, Nursing and Education) follow-up calls.
- * 521 individuals were assisted with Respite Services.
- * Immunizations were given to 1,328 children for a grand total of 4,688 shots.
- * 1,814 women and children were examined in the WIC program.
- * 61 children were enrolled in Kids Connection.
- * 408 individuals received Nurse Case Management.
- * Diabetes was found in 26 individuals completing our survey.
- * EPSDT Reminders (health checks) were given to 391 families.
- * 264 individuals without a family physician were found medical homes.
- * 115 calls were received on the Breastfeeding Education Line.
- * Every Woman Matters applications (breast cancer awareness) were distributed to 747 women.
- * 65 women were enrolled (assisted with treatment costs) in EWM.
- * 95 individuals were assisted in getting prescriptions through the Indigent Drug Program.
- * 35 home visits were made by the BVCA Community Health Nurse.
- * 372 children were tested for lead in their blood, 27 of which were referred to physicians due to elevated levels.
- * 350 children received services through the Maternal and Child Health Program.
- * 66 women (34 English-speaking and 32 Spanish-speaking) attended two sessions covering child birthing and breastfeeding.
- * 169 BVCA staff members participated in the agency-wide wellness fair.

NUTRITION SERVICES

- * 3,147 meals were provided to domestic abuse victims.
- * Head Start provided 46,088 meals and 1,531 snacks to children.
- * Blue River Family Resource Center provided 27,031 meals and 11,774 snacks to children.
- * 2,696 individuals/1,043 households benefited from food pantries.
A total of 77,093 days of food were provided.



- * Commodity Supplemental Food Distribution (CSFP) enrolled 1,332 individuals. (1,015 elderly and 317 women and children)
- * Volunteer hours at commodities clinics totaled 1,193 hours.
- * Value of volunteers at commodity clinics totaled \$7,337.

Helping People...Changing Lives

FAMILY DEVELOPMENT

Thirty-one families in BVCA Partnership's family development projects worked to initiate positive changes in their lives. Both Project FIRST (dealing with homeless) and Project FOCUS (for families trying to make specific, major life direction changes) use the family development process.



During the past year, the Blue River Family Center provided a wide variety of services in the Crete area. Programs included education for children and adults, English as a Second Language classes, Migrant Education for both children and adults, computer literacy training, Health and Wellness programs, Hispanic Healthcare Program, community education, emergency assistance, mental health, and family strengthening programs. Families have been given Parenting Education classes and at-home courses. An E-mail service for parenting support and a resource library are now available for parents, foster parents and childcare providers.

OUTREACH SERVICES

BVCA Partnership provides outreach services to families in need. These services include family development case management, home visitation, education, information and referrals.

Family Development. 67% of enrolled families have increased their incomes by over 60%. BVCA staff assisted seven families to access the Earned Income Tax Credit Program returning to them \$14, 284.

Referral services were provided to 7,563 individuals, which is up 99% from last year.



TRANSPORTATION SERVICES

BVCA operates the Fillmore County Rural Transit Service. Rides are available, for a small fee, to the general public, with elderly and handicapped residents given priority. Last year, 6,409 trips were made for 145 passengers.



"I don't know what I'd do without my ride."

EMERGENCY SERVICES

For victims of domestic violence:

- * Four clients participated in domestic abuse case management.
- * 135 Crisis Intervention information presentations were given.
- * 5,230 individuals attended presentations on Domestic Abuse and Sexual Assault.
- * 14 of the 30 child deaths occurring between 1998 and 2003 in Nebraska were a result of domestic violence.
- * 1,898 victims called the Domestic Abuse Crisis Line from 7 of the 9 BVCA Partnership service area counties.
- * Domestic Abuse Awareness presentations were given at 87 schools.
- * 130 individuals of domestic violence were sheltered.
- * 516 individuals of domestic violence were assisted with information, services but not shelter.



For needy families and individuals:

- * Value of food, clothing and other goods totaled \$1,777,140.
- * 1,644 individuals benefited from special event distributions.
- * 82 families were assisted with emergency needs other than food rent or utilities.

HOMELESS SERVICES

- * 13 families participated in Project FIRST (transitioning homeless to permanent housing).
- * 368 families received assistance for rent and/or utilities, effectively preventing homelessness.
- * 268 individuals were provided safe lodging, food, transportation, counseling, medical and/or legal referrals along with case management options for a safe future.

JUVENILE SERVICES

- * 29 youth were served by BVCA Partnership's Juvenile Diversion Program.
- * Nineteen youth are currently involved in the SE Nebraska Youth Empowerment Council.
- * Juvenile Services staff supported 78 at-risk youth not yet within the justice system with Educational Outreach.
- * BVCA Partnership's Juvenile Services provided 981 youth with alcohol and drug prevention education in three schools.
- * 71 youth became involved in service learning projects within their communities.
- * 150 youth attended various youth conferences sponsored by BVCA Partnership's Juvenile Services.



The National Civilian Community Corps (NCCC) Members from around the country (pictured left), spent a month in Fairbury assisting with the demolition and remodeling of BVCA Partnership's newest facility, the Fairbury Youth Involvement (FYI) Center. The FYI Center offers youth tutoring, technology training and other after school activities. It currently houses BVCA's Juvenile Diversion Program and the AmeriCorps Program and Members.

Helping People...Changing Lives

CHILDREN SERVICES

BVCA Partnership Children & Youth Services Department serves children age 0-5 and their families. The main components of the programs are: Early Childhood Development and Health Services; Family and Community Partnerships; and Program Design and Management. Comprehensive child development includes health, nutrition, social interactions, parent involvement, education and, of course, caring, dedicated teachers.



1,272 family members were served by Head Start and Early Head Start.

Full Enrollment. Head Start: 249 authorized, 308 actually enrolled. Early Head Start: 40 authorized, 60 actually enrolled.

Waiting List. Head Start: First day of classes—96 or 39% of enrollment. Last day of classes—110 or 44% of enrollment. Early Head Start: First day of classes—33 or 83% of enrollment. Last day of classes—37 or 93% of enrollment.

Benefits of Head Start:

Parent Employment: 2003-2004 saw a 9.7% reduction in unemployed Head Start parents and a 26.2% reduction in unemployed Early Head Start parents during their one year in the program.

Health: 343 Head Start and Early Head Start children, which is 94.5% of the actual enrollment (119% of authorized enrollment), were given medical and dental exams, immunizations and/or mental health screenings.

Transition: Head Start works closely with public schools and other childcare providers throughout the area. Head Start families visit schools and school personnel present at Head Start Parent meetings. BRCDP partners with Crete Public Schools in several ways including integration with English as a Second Language classes, Even Start and Migrant Even Start. It also offers space for the Crete Public Schools' CIRCLE preschool program and provides childcare for Crete Public Schools' English classes.

LITERACY

*"Thank you very much!...
The books were a real
treat. One was a book that
I had wanted to buy, but
felt that I shouldn't use
our money for that earlier
this year."*

—Head Start Parent



The Blue River Child Development Program

BRCDP serves families with infants, toddlers, preschoolers and school-aged children with a wide range of child development and family services. BRCDP served 212 children.

Blue River Child Development Program is open 74.9 hours per week to accommodate the needs of working parents.

Also offered is training to in-home daycare providers and other childcare centers via a variety of training venues, including three BVCA Partnership satellite locations within the area.

Helping People...Changing Lives

Helping People...Changing Lives

HOUSING AND RURAL DEVELOPMENT

- * BVCA Partnership rents 199 housing units, 155 of which have been built by BVCA Partnership since 1995. BVCA provided rental housing to 507 individuals in 259 families.
- * The organization primarily builds individual family units via its "Lease-to-Own" projects for young families struggling to get a start in home ownership. It also helps with affordable housing for senior citizens or for retired, fixed-income residents. During the past year four of the "Lease-to-Own" families have transitioned to homeowners.
- * Twenty families were provided with Homebuyer Education.
- * Twenty families were assisted in purchasing homes—leveraging \$1,106,754 privately with \$125,495 in down payment assistance.



- * BVCA Partnership weatherized 77 homes, assisting 124 individuals with more efficient energy use within their homes. BVCA conducted a study in one county which showed energy costs were reduced by 56%.
- * Five families were assisted with housing rehabilitation.
- * Ten families were provided with safe furnaces.

- * BVCA formed a partnership with five other organizations to address sustaining existing housing in the seventeen counties of southeast Nebraska.
- * In response to tornado damage, Blue Valley Community Action Partnership has offered rehab and new home construction assistance in Deshler (Thayer County), and in Gage and Saline Counties particularly the Wilber area. In addition, BVCA partnered with another organization to provide similar services to Cass County.

"I am a single mother of four children. I first became involved with BVCA nine years ago when my oldest son attended Head Start for two years... I own my own home now because of the help of BVCA and I am currently in the process of owning my own business... There are so many wonderful things that you all have done for my family, I can't even thank you enough..."

—Client

REAL ESTATE LIMITED PARTNERSHIPS

	<u>Income</u>	<u>Assets</u>
East Meadows, Ltd., Crete	\$32,592	\$393,899
West Meadows, Ltd., Crete	\$34,069	\$425,777
Pinegrove, Ltd., Wymore	\$26,739	\$474,198
Trailview, Ltd., Hebron	\$25,656	\$445,474
Crestland, Ltd., Beatrice	\$61,290	\$1,249,112
Prairie Woods CROWN, Ltd., York	\$72,417	\$2,552,403
Blue Terrace CROWN, Ltd., Crete	\$82,706	\$2,554,024
Sunset CROWN, Ltd., Beatrice	\$79,970	\$2,811,065
Total	\$415,439	\$10,905,952



VOLUNTEER OPPORTUNITIES

BVCA Partnership provides numerous volunteer opportunities. This includes such opportunities as volunteering in clothing rooms and food pantries, at commodity distribution sites, as classroom aides, as a Foster Grandparent, with Youth As Resources, AmeriCorps/NE Reads or assisting with holiday projects. Volunteers can also serve on local County Advisory Boards, Head Start Policy Council or the BVCA Partnership Board of Directors.

- * Value of donated space totaled \$55,067.
- * 55,311 volunteer hours were donated to Children & Youth Services.
- * Volunteers accounted for 20.7% of the commodity program hours.
- * The Foster Grandparents Program offers lower-income seniors a chance to pass on skills to needy youngsters. BVCA Partnership's program has 61 grandparents working a minimum of 15 and a maximum of 40 hours per week at 26 sites in 11 counties serving over 300 needy children. Our Foster Grandparents have 60-93 years of experience.



STAFF

- * 67 Staff have college degrees.
- * 32 staff have CDA's (Child Development Associates)
- * From 204 employees in 2000, BVCA has grown 30% to a high of 266 employees in 2004.
- * BVCA staff are active in state and local professional associations.
- * Ten staff attended the National Community Action Partnership Conference in Washington, D.C., three of whom presented.
- * As part of employee development, internal trainings were held:
 - * 25 staff attended quarterly new employee, two-day orientation sessions.
 - * 18 employee handbook training sessions
 - * 8 supervisor training sessions
 - * All Staff meetings were held in Seward, Nebraska and Smith Center, Kansas.
 - * An All Staff Wellness Fair was held in Beatrice, Nebraska.



Wearing different Hats at All Staff Meeting.

BVCA Partnership's first Family Fun Day was held in August. A potluck picnic and games for children and adults kept folks entertained. A silent auction helped raise funds for the National Community Action Foundation.



Patti Seitz, CSFP, gets a tattoo!



Staff donated "Personality Pails" for the silent auction.



Attendees enjoy the picnic.

Helping People...Changing Lives

THE ADMINISTRATIVE OFFICES OF BVCA PARTNERSHIP

620 5TH STREET, P.O. BOX 273, FAIRBURY, NE 68352

PHONE: (402) 729-2278 FAX: (402) 729-2801

WEBSITE: www.bvca.net E-MAIL: changinglives@bvca.net

CHILDREN & YOUTH SERVICES FIELD OFFICES

BUTLER COUNTY HEAD START
284½ 9TH STREET
DAVID CITY, NE 68632
PHONE: (402) 367-6037
butlerhs@bvca.net

JEWELL COUNTY HEAD START
301 NORTH WEST STREET
P.O. BOX 392
MANKATO, KS 66956
PHONE: (785) 378-3344
jewellhs@bvca.net

THAYER COUNTY HEAD START
335 EADS AVENUE
HEBRON, NE 68370
PHONE: (402) 768-6727
thayerhs@bvca.net

FILLMORE COUNTY HEAD START
1600 I STREET
GENEVA, NE 68361
PHONE: (402) 759-3699
fillmorehs@bvca.net

SALINE COUNTY HEAD START
325 EAST 9TH STREET
CRETE, NE 68333
PHONE: (402) 826-5221
salinehs@bvca.net

YORK COUNTY HEAD START
414 DELAWARE AVENUE
YORK, NE 68467
PHONE: (402) 362-4299
yorkhs@bvca.net

GAGE COUNTY HEAD START
BEATRICE CENTER
5109 WEST SCOTT RD., SUITE 412
BEATRICE, NE 68310
PHONE: (402) 223-6035
beatricehs@bvca.net

SEWARD COUNTY HEAD START
412 FAITH LANE, P.O. BOX 53
SEWARD, NE 68434
PHONE: (402) 643-6272
sewardhs@bvca.net

EARLY HEAD START
GAGE COUNTY
5109 WEST SCOTT ROAD, SUITE 404
BEATRICE, NE 68310
PHONE: (402) 223-6056
beatriceehs@bvca.net

GAGE COUNTY HEAD START
WYMORE CENTER
517 NORTH 12TH STREET
WYMORE, NE 68466
PHONE: (402) 645-3441
wymorehs@bvca.net

SMITH COUNTY HEAD START
221½ MAIN STREET, P.O. BOX 282
SMITH CENTER, KS 66967
PHONE: (785) 282-6011
smithhs@bvca.net

EARLY HEAD START
SALINE COUNTY
214 WEST 3RD STREET, BOX 723
WILBER, NE 68465
(402) 821-2335
salineehs@bvca.net

JEFFERSON COUNTY HEAD START
1303 B STREET
FAIRBURY, NE 68352
PHONE: (402) 729-2161
jeffersonhs@bvca.net

BLUE RIVER FAMILY CENTER
325 EAST 9TH STREET, P.O. BOX 304
CRETE, NE 68333
PHONE: (402) 826-4216
blueriver@bvca.net

BLUE VALLEY CRISIS INTERVENTION FIELD OFFICES

CRISIS HOTLINE: 1 (800) 876-6238

BVCI—BEATRICE OFFICE
5109 WEST SCOTT RD, SUITE 407
BEATRICE, NE 68310
PHONE: (402) 223-6635
beatricecrisis@bvca.net

BVCI—CRETE OFFICE
235 EAST 9TH STREET, SUITE 2
CRETE, NE 68333
PHONE: (402) 826-5727
cretecrisis@bvca.net

BVCI—YORK OFFICE
608 GRANT STREET, SUITE B
YORK, NE 68467
PHONE: (402) 362-4724
yorkcrisis@bvca.net

FAMILY & COMMUNITY SERVICES FIELD OFFICES

BUTLER COUNTY FCS 416 E STREET DAVID CITY, NE 68632 PHONE (402) 367-4347 butlerfcs@bvca.net	POLK COUNTY FCS 440 NEBRASKA AVENUE P.O. BOX 63 OSCEOLA, NE 68651 PHONE (402) 747-2102 polkfcs@bvca.net	FILLMORE COUNTY TRANSIT 1120 F STREET GENEVA, NE 68361 PHONE (402) 759-3345 fct@bvca.net
FILLMORE COUNTY FCS 130 SOUTH 8 TH STREET GENEVA, NE 68361 PHONE (402) 759-3564 fillmorefcs@bvca.net	SALINE COUNTY FCS 245 EAST 9 TH STREET, SUITE 1 CRETE, NE 68333 PHONE (402) 826-2376 salinefcs@bvca.net	FOSTER GRANDPARENTS PROGRAM BEATRICE OFFICE 5109 WEST SCOTT RD STE 415 BEATRICE, NE 68310 PHONE (402) 223-6036 fostergrandparent@bvca.net
GAGE COUNTY FCS 5109 WEST SCOTT RD, STE 402 BEATRICE, NE 68310 PHONE (402) 223-6034 gagefcs@bvca.net	SEWARD COUNTY FCS 640 SEWARD STREET, P.O. BOX 342 SEWARD, NE 68434 PHONE (402) 643-6425 sewardfcs@bvca.net	FOSTER GRANDPARENTS PROGRAM GENEVA OFFICE 130 SOUTH 8TH STREET GENEVA, NE 68361 PHONE (402) 759-3564
JEFFERSON COUNTY FCS 608 14 TH STREET FAIRBURY, NE 68352 PHONE (402) 729-5568 jeffersonfcs@bvca.net	THAYER COUNTY FCS 135 NORTH 4 TH STREET HEBRON, NE 68370 PHONE (402) 768-6704 thayerfcs@bvca.net	SALINE COUNTY ELDERCARE 109 WEST 3 RD STREET, P.O. BOX 812 WILBER, NE 68465 PHONE (402) 821-3330 salineeldercare@bvca.net
	YORK COUNTY FCS 3401 NORTH LINCOLN AVENUE YORK, NE 68467 PHONE (402) 362-3516 yorkfcs@bvca.net	

HOUSING & RURAL DEVELOPMENT FIELD OFFICE

HOUSING—BEATRICE OFFICE
1009½ MERIWETHER STREET, P.O. BOX 656
BEATRICE, NE 68310
PHONE: (402) 223-4221
beatricehsg@bvca.net

HEALTH SERVICES TOLL-FREE NUMBERS

BREASTFEEDING EDUCATION LINE.....	1 (866) 692-BABY
NE RESPITE NETWORK	1 (866) RESPITE
CATCH.....	1 (866) 24 CATCH
WIC (SALINE, SEWARD, YORK & FILLMORE COUNTIES).....	1 (866)907-4014

Acknowledgment

Blue Valley Community Action Partnership would like to thank the counties, communities, agencies and dedicated individuals who make the work of our organization successful and positive for those we touch and who touch us by their gratitude and generosity.

Our private non-profit corporation has become a major community resource for those in need throughout the area. It would not have happened without dedicated staff, community support and the hundreds of volunteers who assist us every year. As we complete our thirty-eighth year we sincerely thank and acknowledge the generosity and community spirit of the folks in Nebraska and Kansas who are our fantastic neighbors and friends.